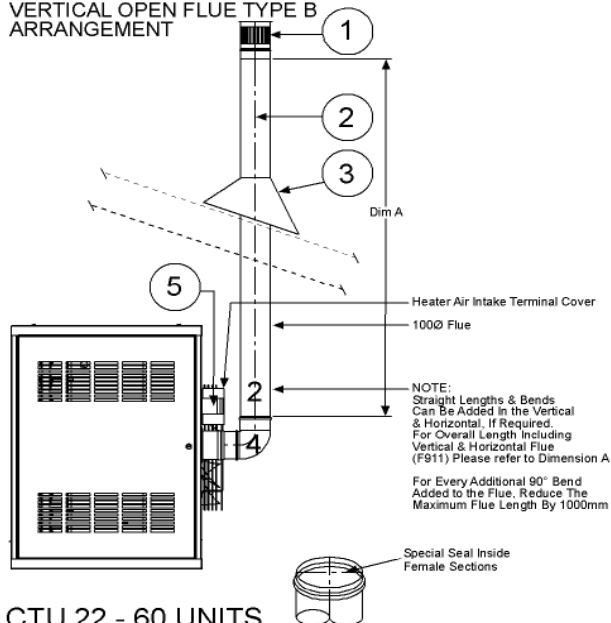
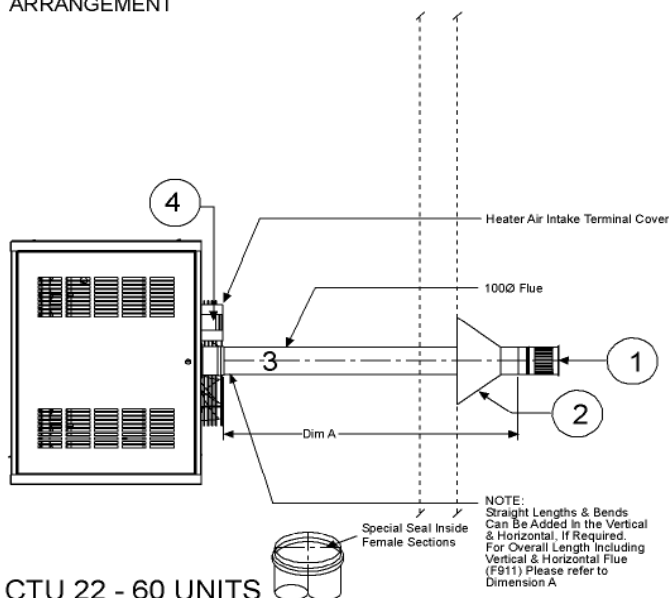


CTU UNIT HEATERS 22 - 60  
VERTICAL OPEN FLUE TYPE B  
ARRANGEMENT

## CTU 22 - 60 UNITS

MINIMUM REQUIREMENTS			
Item	Part No	Description	Quantity
1	F074A	Flue Terminal	1
2	F911	100mmØ x 1000mm Length	Min.2
3	F319	Masterflash	1
4	F913	100mmØ x 90° Bend	1
5	F077A	Heater Air Intake Terminal	1
OPTIONAL EXTRAS			
6	F914	100mmØ x 45° Bend	Min.2

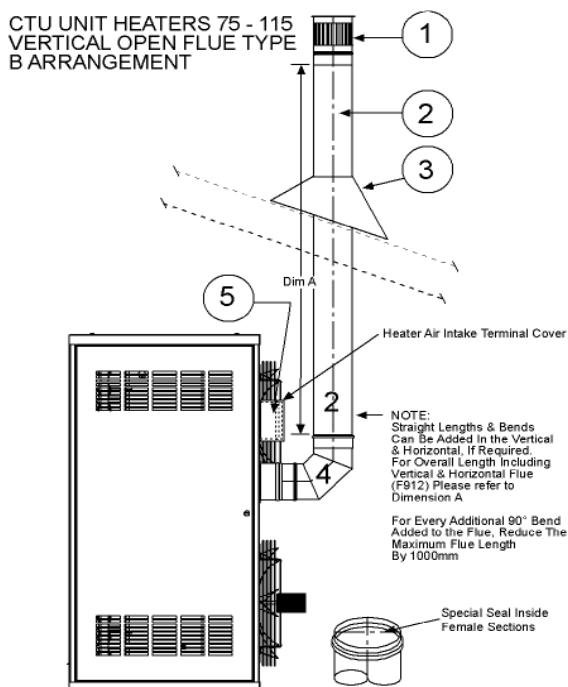
Model	Dim. A
CTU 22	6 Mt
CTU 30	7 Mt
CTU 40	9 Mt
CTU 50	12 Mt
CTU 60	14 Mt

CTU UNIT HEATERS 22 - 60  
HORIZONTAL OPEN FLUE TYPE B  
ARRANGEMENT

## CTU 22 - 60 UNITS

MINIMUM REQUIREMENTS			
Item	Part No	Description	Quantity
1	F074A	Flue Terminal	1
2	F319	Masterflash	1
3	F911	100mmØ x 1000mm Length	Min.2
4	F077A	Heater Air Intake Terminal	1
OPTIONAL EXTRAS			
5	F914	100mmØ x 45° Bend	1
6	F913	100mmØ x 90° Bend	1

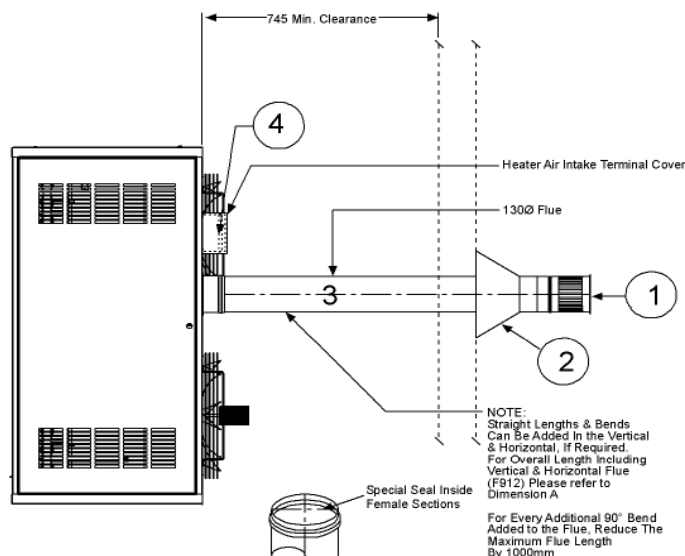
Model	Dim. A
CTU 22	7 Mt
CTU 30	8 Mt
CTU 40	10 Mt
CTU 50	13 Mt
CTU 60	15 Mt

CTU UNIT HEATERS 75 - 115  
VERTICAL OPEN FLUE TYPE B  
ARRANGEMENT

## CTU 75 - 115 UNITS

MINIMUM REQUIREMENTS			
Item	Part No	Description	Quantity
1	F075A	Flue Terminal	1
2	F912	130mmØ x 1000mm Length	Min.2
3	F319	Masterflash	1
4	F915	130mmØ x 90° Bend	1
5	F078A	Heater Air Intake Terminal	1
OPTIONAL EXTRAS			
6	F916	130mmØ x 45° Bend	Min.2

Model	Dim. A
CTU 75	14 Mt
CTU 90	16 Mt
CTU 100	19 Mt
CTU 115	19 Mt

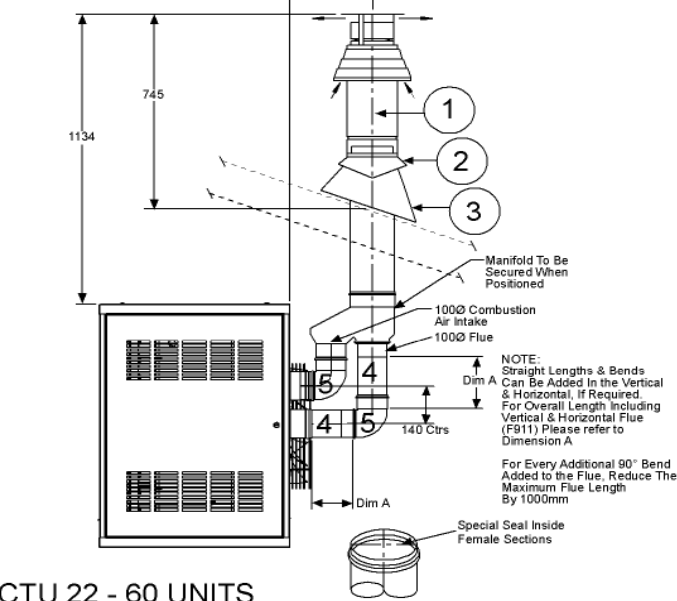
CTU UNIT HEATERS 75 - 115  
HORIZONTAL OPEN FLUE  
TYPE B ARRANGEMENT

## CTU 75 - 115 UNITS

MINIMUM REQUIREMENTS			
Item	Part No	Description	Quantity
1	F075A	Flue Terminal	1
2	F319	Masterflash	1
3	F912	130mmØ x 1000mm Length	Min.2
4	F078A	Heater Air Intake Terminal	1
OPTIONAL EXTRAS			
5	F916	130mmØ x 45° Bend	Min.1
6	F915	130mmØ x 90° Bend	Min.1

Model	Dim. A
CTU 75	15 Mt
CTU 90	17 Mt
CTU 100	20 Mt
CTU 115	20 Mt

CTU UNIT HEATERS 22 - 60  
VERTICAL ROOM SEALED  
TYPE C ARRANGEMENT

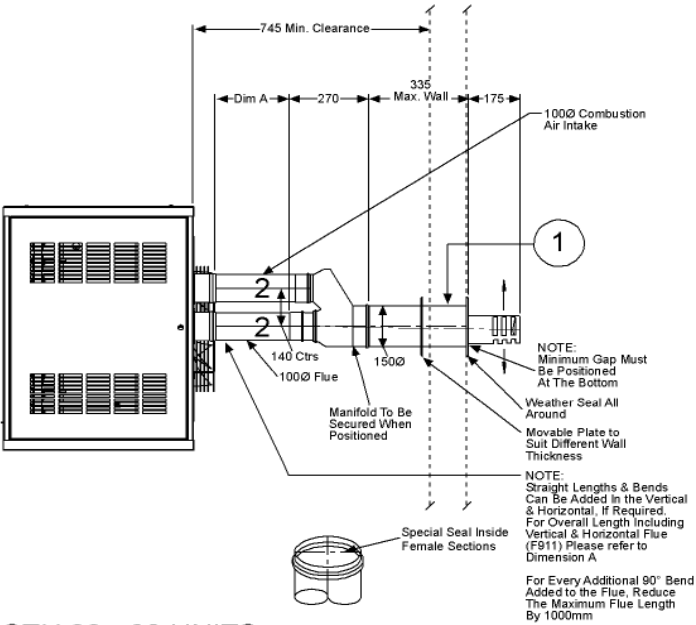


CTU 22 - 60 UNITS

MINIMUM REQUIREMENTS			
Item	Part No	Description	Quantity
1	F901	Roof Terminal & Manifold	1
2	F903	Plastic Cup	1
3	F319	Masterflash	1
4	F911	100mmØ x 1000mm Length	Min.2
5	F913	100mmØ x 90° Bend	Min.2
OPTIONAL EXTRAS			
6	F914	100mmØ x 45° Bend	Min.4

Model	Dim. A
CTU 22	6 Mt
CTU 30	7 Mt
CTU 40	9 Mt
CTU 50	12 Mt
CTU 60	14 Mt

CTU UNIT HEATERS 22 - 60  
HORIZONTAL ROOM SEALED  
FLUE TYPE C ARRANGEMENT

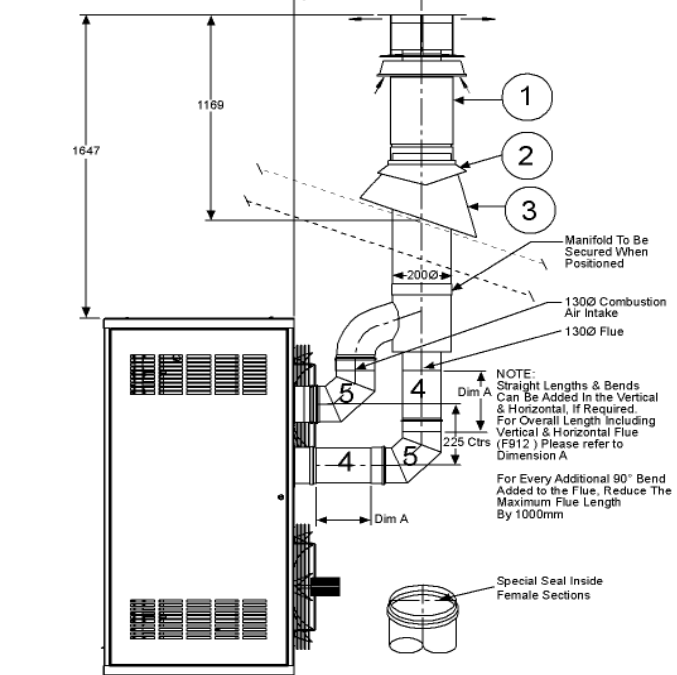


CTU 22 - 60 UNITS

MINIMUM REQUIREMENTS			
Item	Part No	Description	Quantity
1	F904	Wall Terminal, Manifold & Wall Plate	1
2	F911	100mmØ x 1000mm Length	Min.2
OPTIONAL EXTRAS			
3	F914	100mmØ x 45° Bend	Min.2
4	F913	100mmØ x 90 Bend	Min.2

Model	Dim. A
CTU 22	7 Mt
CTU 30	8 Mt
CTU 40	10 Mt
CTU 50	13 Mt
CTU 60	15 Mt

CTU UNIT HEATERS 75 - 115  
VERTICAL ROOM SEALED FLUE  
TYPE C ARRANGEMENT

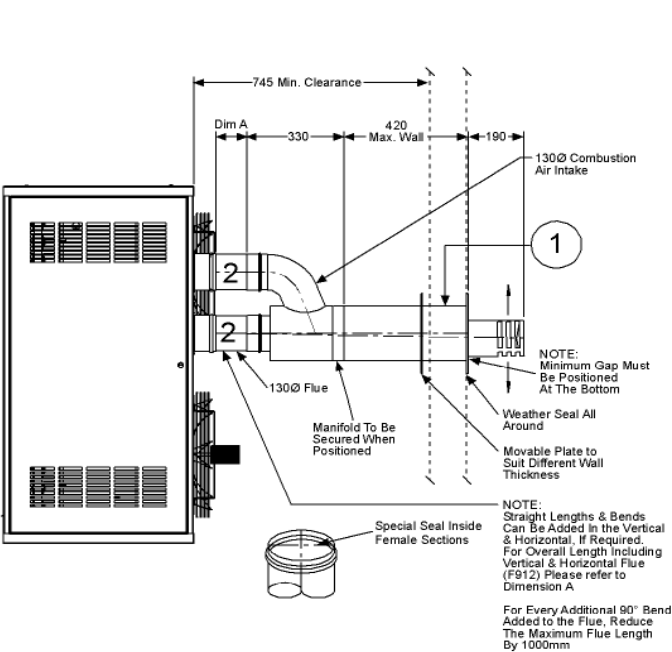


CTU 75 - 115 UNITS

MINIMUM REQUIREMENTS			
Item	Part No	Description	Quantity
1	F905	Roof Terminal & Manifold	1
2	F907	Plastic Cup	1
3	F319	Masterflash	1
4	F912	130mmØ x 1000mm Length	Min.2
5	F915	130mmØ x 90° Bend	Min.2
OPTIONAL EXTRAS			
6	F916	130mmØ x 45° Bend	Min.4

Model	Dim. A
CTU 75	14 Mt
CTU 90	16 Mt
CTU 100	19 Mt
CTU 115	19 Mt

CTU UNIT HEATERS 75 - 115  
HORIZONTAL ROOM SEALED FLUE  
TYPE C ARRANGEMENT



CTU 75 - 115 UNITS

MINIMUM REQUIREMENTS			
Item	Part No	Description	Quantity
1	F908	Wall Terminal, Manifold & Wall Plate	1
2	F912	130mmØ x 1000mm Length	Min.2
OPTIONAL EXTRAS			
3	F916	130mmØ x 45° Bend	Min.2
4	F915	130mmØ x 90 Bend	Min.2

Model	Dim. A
CTU 75	15 Mt
CTU 90	17 Mt
CTU 100	20 Mt
CTU 115	20 Mt